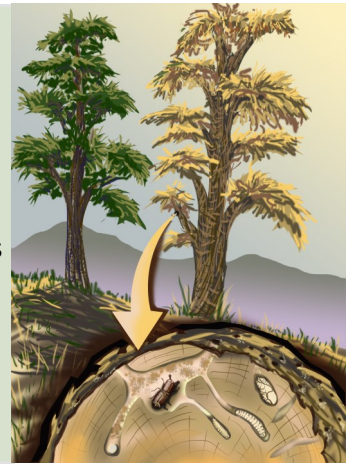


Write a diamante poem about these beetles

Bark and wood-boring beetles usually lay their eggs in stressed, diseased and dying trees. Adult beetles enter the trees through cracks in bark or behind loose bark. Eggs are laid in shallow tunnels made by the adults. Eggs progress from larvae to pupa eventually becoming adults. They feed on phloem and sometimes the fungi growing within the tunnels. This can take from one to three or more years depending on the species of beetle, climate and other factors. When ready to fly, mature beetles make exit holes in the tree. They seek other trees in which to repeat their life cycle. Beetles renew forests by killing older or stressed trees and by decomposing wood. Some become notorious pests.



Diamante is a poem in the shape of a diamond.

Diamante poems are seven lines long. The line pattern goes like this:

Line 1. Noun

Line 2. Two adjectives

Line 3. Three participles

Line 4. Four nouns.

Line 5. Three participles

Line 6. Two adjectives

Line 7. Noun

EXAMPLE

Woodpecker

jerky, noisy

climbing, pecking, excavating

eggs, hatchlings, nestlings, fledglings

flying, foraging, surviving

big, dead

tree

Your poem

A diamond-shaped template for writing a diamante poem. The diamond is outlined in black and contains seven horizontal lines of varying lengths, centered within the diamond. The lines are arranged to fit the diamond's shape, with the longest line in the middle and the shortest lines at the top and bottom vertices.